

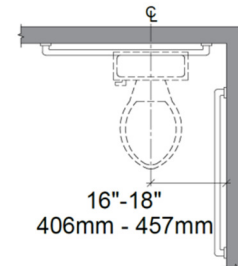
ADA Compliance for Restroom Partitions

The following information is provided as a summary of currently available data in the industry. It is not intended to be an interpretation of ADA Accessibility Guidelines (ADAAG), rather a reference for further research. Consult your local, municipal, state and federal codes or guidelines. Conformity and compliance to local, municipal, state and federal codes is the responsibility of the end user.

General Information

Toilet Stall

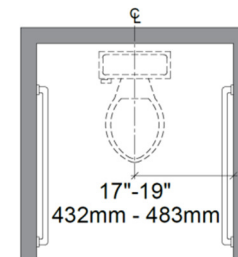
- The size and arrangement of the standard toilet stall shall comply with Figure (a), standard stall. Standard toilet stalls with minimum depth of 56 inches (1422 mm) shall have wall mounted water closets. If the depth of a standard toilet stall is increased at least 3 inches (76 mm), then a floor-mounted water closet may be used. Arrangements shown for standard toilet stalls may be reversed to allow either a left or right-hand approach. See Figure (b)
- The water closet shall be positioned with a wall or partition to the rear and to one side. The centerline of the water closet shall be 16 inches (405 mm) minimum to 18 inches (455mm) maximum from the side wall or partition. See figure (1)



Wheelchair accessible
Water closet
Figure (1)

Ambulatory Accessible Stalls

- Ambulatory accessible stalls shall have a depth of 60 inches (1525 mm) minimum, a width of 35 inches (890 mm) minimum and 37 inches (940 mm) maximum. See figure (c).
- The water closet shall be position 17 inches (430 mm) minimum and 19 inches (485 mm) maximum from the side wall or partition. See figure (2).



Wheelchair accessible
Water closet
Figure (2)

Doors

- Toilet stall doors, including hardware, shall have a minimum clear opening of 32" with the door open 90 degrees, measured between the face of the door and the opposite stop.
- Doors shall be located in the front partition or in the side wall or partition farthest from the water closet. Where located in the front partition, the door opening shall be 4 inches (100 mm) maximum from the side wall or partition farthest from the water closet. Where located in the side wall or partition, the door opening shall be 4 inches (100 mm) maximum from the front partition. If the approach to the toilet stall is to the latch side of the compartment door, clearance between the door side of the compartment and any obstruction shall be 42 inches (1065 mm) minimum. See figure (a) and (b). Toilet compartment doors shall not swing into the minimum required compartment area. The door shall be self-closing.

- Door hardware such as - handles, pulls, latches, locks, and other type of operating devices on accessible doors shall have a shape that is easy to grasp with one hand and does not require tight grasping, tight pinching, or twisting of the wrist to operate. Lever operated mechanisms, push type mechanisms, and U-shaped handles are acceptable designs.
- A door pull shall be placed on both sides of the door near the latch. Hardware required for accessible door passage shall be mounted no higher than 48" above finished floor.

Toe Clearances

- In standard stalls, the front partition and at least one side partition shall provide a toe clearance of at least 9" above the floor. If the depth of the stall is greater than 60", then the toe clearance is not required.

Urinals

- Urinals shall be stall type of wall hung with elongated rim at a maximum of 17" above finished floor. A clear floor space of 30" by 48" shall be provided in front of urinals to allow forward approach.