

# color selector for powder-coated baked enamel



## FLORIDA

11400 NW 36th Avenue, Miami, Florida 33167  
P. 305/821-5700 F. 866/216-5300 email: florida@ampco.com

## TENNESSEE

1200 Violet Street, Morristown, Tennessee 37814  
P. 423/586-3993 F. 866/902-5370 email: tennessee@ampco.com

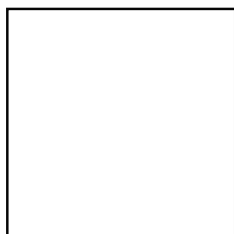
## TEXAS

201 Railroad Avenue, Sanger, Texas 76266  
P. 940/458-7401 F. 866/372-5300 email: texas@ampco.com

## WASHINGTON

4520 B Street NW, Suite B, Auburn, Washington 98001  
P. 253/852-5900 F. 866/323-5300 email: washington@ampco.com

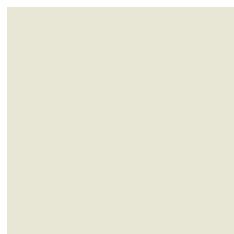
## STANDARD COLORS \* E Indicates colors available for Express Ship Program



White 949PC



Porcelain 466PC



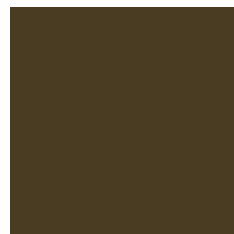
Folkstone 927PC



Almond 920PC



Organic Green 6904PC



Dark Chocolate 2200PC



Stop Red 839PC



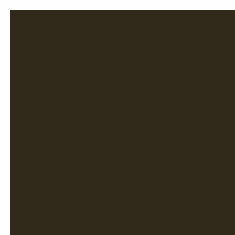
Burgundy 966PC



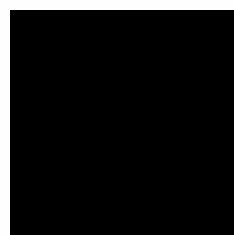
Marine Blue 914PC



Steel 1484PC



Graphite 837PC

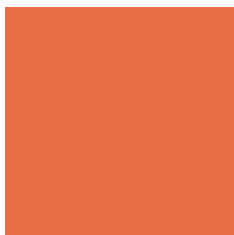


Black 909PC

## PREMIUM COLORS



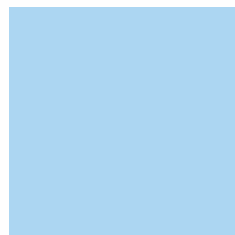
Hunter Green 967PC



Pure Orange 2004PC



Tan 0055PC



Peaceful Blue 231PC

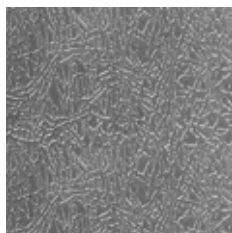
**PLEASE BE ADVISED THAT COLOR SELECTOR CONTAINS A DIGITAL REPRESENTATIONS OF THE COLOR. ACTUAL COLOR MAY VARY. REFER TO ACTUAL PRODUCT SAMPLES FOR FINAL SELECTION.**

## STAINLESS STEEL STANDARD FINISH

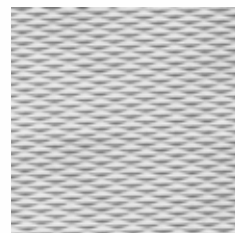


Brushed Stainless

## STAINLESS STEEL PREMIUM FINISH



Leather Grain



5WL

This color selector contains computer printed representations of powder coated paint colors. Refer to actual product samples to confirm your selection.

**Colors may vary from swatches shown. Actual coated chips are available upon request.**

For premium and non-standard colors, an additional charge may apply. Check with the factory for pricing and availability.

LEED credit applicable in some applications. Please check factory for more information. Metal Toilet Partitions are manufactured in AMPCO Texas.

AMPCO manufactures High Pressure Laminate, Phenolic, Phenolic with PVC edging, Color thru Phenolic (Evergreen),

Powder-Coated Steel, Stainless Steel, Solid Plastic, Solid Surface and Solid Surface Veneer Toilet Partitions and Architectural Flush Wood Doors.

For Quick Quotes  
quotes@ampco.com

Toll free fax for quotes: 1-866-216-5300

11/01/10

