

Evergreen

Solid Color Core Phenolic

FLORIDA

11400 NW 36th Avenue, Miami, Florida 33167
P. 305/821-5700 F. 866/216-5300 email: florida@ampco.com

TENNESSEE

1200 Violet Street, Morristown, Tennessee 37814
P. 423/586-3993 F. 866/902-5370 email: tennessee@ampco.com

TEXAS

201 Railroad Avenue, Sanger, Texas 76266
P. 940/458-7401 F. 866/372-5300 email: texas@ampco.com

WASHINGTON

4520 B Street NW, Suite B, Auburn, Washington 98001
P. 253/852-5900 F. 866/323-5300 email: washington@ampco.com



Evergreen are face sheets that are bonded under heat and high pressure to phenolic resin-impregnated kraft paper sheets. All exposed edge compartments are solid color, chamfered and free of milling marks.

Evergreen compartment systems are tough and durable. This beautiful material has solid color throughout.

Popular in high traffic public buildings, schools, and institutional facilities.

Virtually indestructible and suitable for wet areas, graffiti resistant finish.



Construction Features:

Mounting Styles:

- 4 Construction Types
- Overhead Braced
- Floor to Ceiling
- Ceiling Hung
- Floor Mounted

Modesty Panels and Sights Screens

Mounting Styles:

- 4 Construction Types
- Floor Anchored
- Floor to Ceiling
- Wall hung
- Leg Screen

Class B Fire Rating ASTM E84

- Flame Spread Index 26-75 maximum
- Smoke Development Index 100-500 maximum

Stiles and Doors 3/4" (19mm)

Panels and Urinal Screens 1/2" (12mm) thick

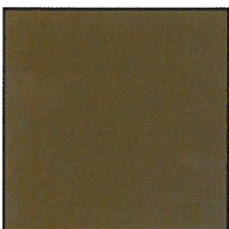
Special Features:

- Non-ghosting graffiti removal
- Water Resistant
- Solid Color throughout
- Stainless Steel hardware
- Furnished hardware to comply with ANSI A117 and Title 1-"T" of the Americans with Disabilities Act (ADA)
- 6 earth tone colors
- 10 year limited warranty

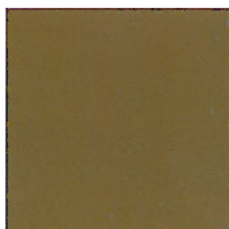
Optional Features:

- Ameriline no-sight line hardware with continuous hinge and strike
- Euroline hardware
- Optional 3/4" (19mm) thick panels/screens

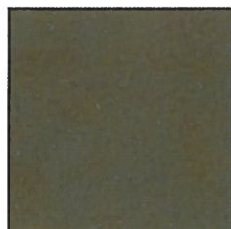
Color Selections



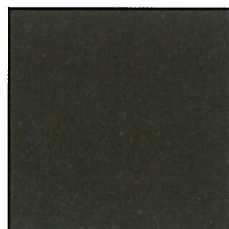
Cinnamon*



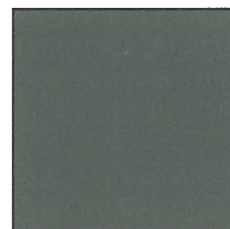
Ginger*



Nutmeg*



Allspice



Gunmetal Grey



Ebony

* Color may apply for Express Ship. Please contact factory for availability.
Color batches may vary.

01/01/10



www.ampco.com