

# color selector for solid surface veneer



## FLORIDA

11400 NW 36th Avenue, Miami, Florida 33167  
P. 305/821-5700 F. 866/216-5300 email: florida@ampco.com

## TENNESSEE

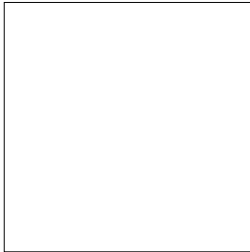
1200 Violet Street, Morristown, Tennessee 37814  
P. 423/586-3993 F. 866/902-5370 email: tennessee@ampco.com

## TEXAS

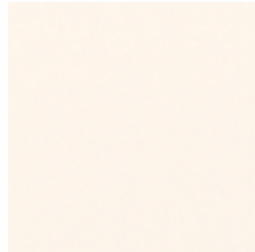
201 Railroad Avenue, Sanger, Texas 76266  
P. 940/458-7401 F. 866/372-5300 email: texas@ampco.com

## WASHINGTON

4520 B Street NW, Suite B, Auburn, Washington 98001  
P. 253/852-5900 F. 866/323-5300 email: washington@ampco.com



8025-Powder



8020-Foam



8022-Cream



9015-Sparkling Water



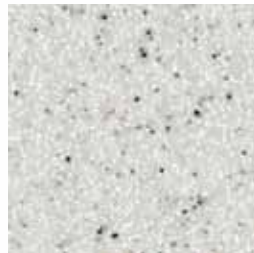
9031-SandCastle



9032- Pumice



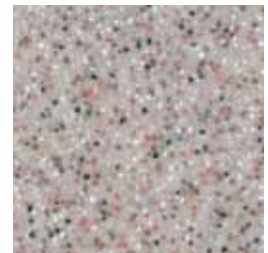
9030- Afternoon Beach



9012- Snowcap



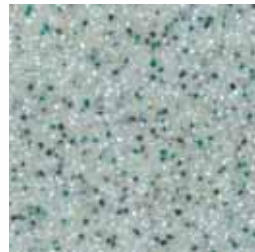
9010- Silica



9042- Reef



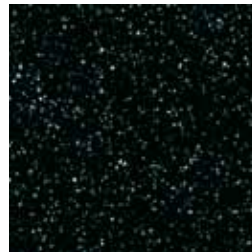
7830- Bronze



9054- Seaweed



7845- Infinity



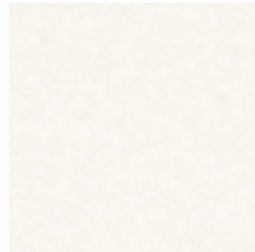
7820- Star Shine



9021- Flint



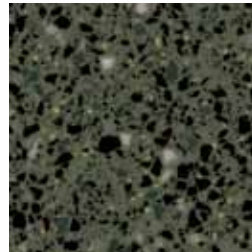
9116- Juneau



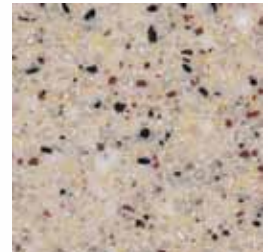
9117- Kokoura



9137- Casablanca



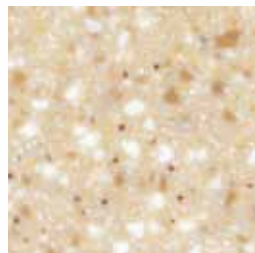
9154- Olivine



9138- Fargo



9144- Palermo



9130- Gold Bullion



9125- Black Coral

Colors may vary from swatches shown. Actual samples are available upon request.

Lead credit applicable in some applications. Please check factory for more information. Solid Surface Veneer toilet partitions are manufactured in AMPCO Florida.

AMPCO manufactures High Pressure Laminate, Phenolic, Phenolic with PVC edging, Powder-Coated Steel, Stainless Steel, Solid Plastic, Solid Surface and Solid Surface Veneer Toilet Partitions and Architectural Flush Wood Doors.

For Quick Quotes  
quote@ampco.com

Toll free fax for quotes: 1-866-216-5300

01/01/2010

