

Solid Plastic Polyethylene (HDPE) Color Chart



White



Hunter Green



Frost



Khaki



Marine Blue



Indigo



Ash Gray



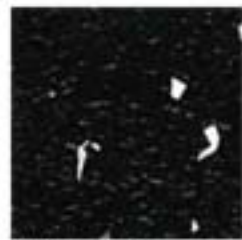
Burgundy Wine



Sable



Black



Black Confetti*



Charcoal

Matching shoes and brackets only available in solid colors.

These are AMPCO Standard Solid Plastic High Density Polyethylene (HDPE) color selections. This color selector contains computer printed representations. Refer to actual product samples to confirm your selection.

Colors may vary from swatches shown. Samples are available upon request.

Please contact factory for actual samples of color and finish.

The Standard finish is a textured finish. Solid plastic material shall be nominal 1" thick polymer resin construction.

*The decorative white particulate or specs in the Black Confetti color is not color through. The white particulate is processed on the surface of each side.

Additional colors are available but carry an up-charge. Contact the factory for pricing and availability.

AMPCO manufactures High Pressure Laminate, Phenolic, Phenolic with PVC edging, Color thru Phenolic (Evergreen), Powder-Coated Steel, Stainless Steel, Solid Plastic, Solid Surface and Solid Surface Veneer Toilet Partitions and Architectural Wood Flush Doors.